

Mounting Instructions

Note: The Co-Locating Mount can be mounted on any flat surface including, but not limited to, walls, ceilings, and I-beams. Mounting hardware is not included with this product. User should identify the mounting surface and then purchase the appropriate mounting hardware.

Caution: Ensure the mounting surface will support the fully assembled unit's weight including the mount itself, the access point, and the antenna.

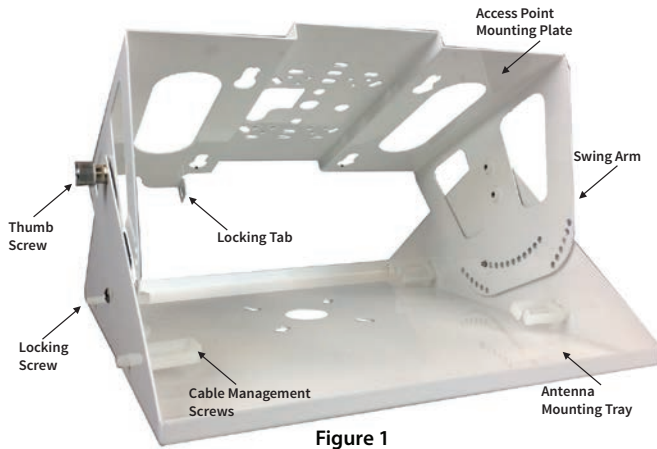


Figure 1

Recommended Hardware:

Dry Wall Mounting:

- 4x Wall Anchors
- 4x Dry Wall Screws that fit the holes shown in Figure 2.

Wood Wall Mounting:

- 4x Wood Screws that fit the holes shown in Figure 2.
- 4x Locking Washers

Metal Surface Mounting

- 4x Metal Screws that fit the holes shown in Figure 2.
- 4x Flat Washers
- 4x Locking Washers

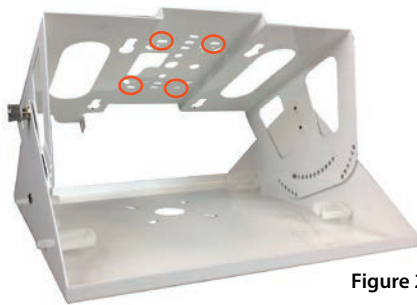


Figure 2

Figure 1

1. Major parts of the Co-Locating Mount. Refer to it as required for the remaining steps.

Figure 2

2. Locate the four slots on the Access Point Mounting Plate circled in Figure 2.
3. Place the Access Point Mounting Plate flat against the mounting surface. Mark the location of the four Mounting Holes on the mounting surface.
4. Remove the Access Point Mounting Plate from the mounting surface.
5. Drill out the mounting holes at the four marked locations.
6. Optional Step for Dry Wall Mounting: Insert the four wall anchors into the four drilled holes and push until the anchors are flush with the wall surface.
7. Place the Access Point Mounting Plate flat against the mounting surface so that the four drilled holes are visible through the four Mounting Holes.
8. Put washer(s) around a screw or bolt, as appropriate.
9. Insert a bolt or screw through the first Mounting Hole and screw into place until the screw is tight. Repeat for the three remaining Mounting Holes. The Co-Locating Mount is now secured to the mounting surface.

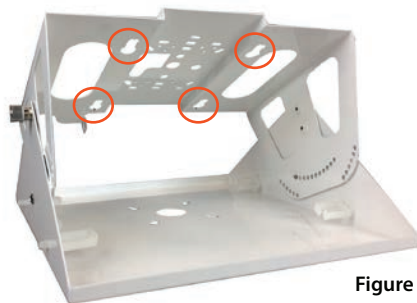


Figure 3

Figure 3

10. Insert the access point's rubber mounting feet into the Mount's Access Point Mounting Slots.
11. Slide the mounting feet inside the Mounting Slots until a "snap" is heard. The access point is now securely mounted to the Access Point Mounting Plate.

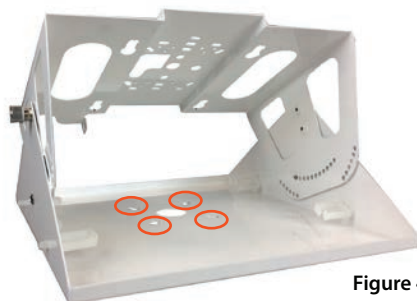


Figure 4

Figure 4

12. Remove the nuts and washers from Antenna mounting bolts located at rear of the antenna. Push the antenna's mounting bolts through the holes in the Antenna Mounting Tray.
13. Re-attach antenna washers and nuts and tighten them to hold antenna securely against Mounting Tray.
14. Run antenna cables through cable management clips and attach cable connectors to Access Point.
15. Optional step for positioning antenna: Loosen the Antenna Mounting Tray's thumb screws and locking screws. Rotate the Antenna Mounting Tray to achieve the desired antenna position. Tighten all screws.
16. Optional step for securing the access point: The access point can be secured to the Access Point Mounting Plate through the locking tab. The most common method is to thread a zip-tie through the Mounting Plate's locking tab and the access point's adjacent locking tab and tighten the zip-tie.